

WATERSKI

CREATE YOUR SPARKLING MOMENT.

HOW TO CHOOSE

173

SKIS

slalom skis
combo skis
trainers

174
178
180

SKI PACKAGES

slalom ski packages
combo ski packages

175
179

BINDINGS

182

ACCESSORIES

ropes & handles
bags

182
183

CHOOSE YOUR WATERSKI

Choosing your ski depends on your skill level and consequently its maneuverability. Combo skis come as a pair and are great to learn the sport. Start with a pair to learn how to water ski and progress to a single ski to perform your first slalom sessions. Ready to advance? Increase your skills with a dedicated slalom ski. Tip: the wider the tip & tail, the easier the start. The narrower, the better the maneuverability. Select your performance ski now!

BEGINNER



BUZZTRAINERS



HEMI TRAINERS



HEMI COMBO SKIS



MODE SLALOM SKI

INTERMEDIATE



ALLEGRE COMBO SKIS



BARON SLALOM SKI

ADVANCED



MODE COMBO SKIS



ENCORE SLALOM SKI



TOE STRAP

The extra molded overlay adds more durability which is useful when you let go of your combo ski to continue slalom skiing.

FIBERGLASS-CARBON COMPOSITE LAY UP

The Encore slalom ski uses a hybrid carbon/fiberglass layup with a polyurethane core that enables this to be a consistent ski to ride, with a "flex pattern" within the tightest tolerances.



GLOSSY TOP

A protective finish on top of the ski for extra durability and luxurious appearance.



ENCORE SLALOM SKI

Item 262320002



SIZE

67"

68"

FEATURES

Sport level slalom ski • 3 Stage flex pattern • PU Core • Blended fiber-glass Carbon composite lay up • Silk screen top sheet • Competition Tail • Edge to edge concave

ENCORE SLALOM SKI PACKAGE



ROGUE SLALOM BINDINGS RIGHT SET

67" - 268820006

68" - 268820008

ROGUE SLALOM BINDINGS LEFT SET

67" - 268820005

68" - 268820007



COMFORT SLALOM BINDINGS SET

67" - 268820010

68" - 268820009

BARON SLALOM SKI PACKAGE



FOCUS SLALOM BINDINGS SET

67" - 268820001

69" - 268820002



COMFORT SLALOM BINDINGS SET

67" - 268820003

69" - 268820004



waterskis 175



ROGUE BINDING

The Rogue Binding is designed with performance in mind: The design characteristics providing the ultimate stability, comfort, and control that demanded from the professional - We have increased lateral support and provided a solid foundation for the heel and ankle through redesigned foot bed and cut lines. This allows the skier greater control and feel of the ski - Performance, comfort, and control.



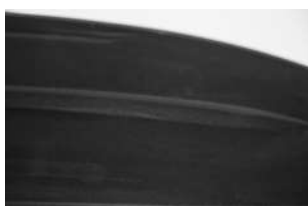
MODE SLALOM SKI

Item 262520001



BARON SLALOM SKI

Item 262320001



SIZE

67"

FEATURES

Beginner level slalom ski • Bright slalom ski aluminium fin for extra visibility • Comfortable rubber fixed binding • Extra slalom toe • Glossy protective top finish • Rim injection construction with extra metal rods for stiffness. • V bottom design for easy edge to edge and better tracking • Binding size • US 6-14 / Europe 36-47



SIZE

67"

69"

FEATURES

Recreational level • 3-stage rocker • Edge-to-edge concave for better traction • Foam core • Standard aluminium slalom fin • High press fiberglass molded

MODE COMBO SKIS

Item 203220001



HEMI COMBO SKIS

Item 202420001



SIZE

67"

FEATURES

Sport level waterskis • Bright fins for extra visibility • Comfortable and supportive rubber fixed binding • Extra slalom toe • Glossy protective top finish • Rim injection construction with extra metal rods for stiffness • V bottom design for easy edge to edge and better tracking • Binding size: US 5,5-14 / Europe 36-47 • Weight range: 67">50kg

SIZE

59"

65"

FEATURES

Beginner level water skis • Bright fins for extra visibility • Comfortable front toe and adjustable heel • Extra molded overlay strap for durability • Extra slalom toe • Glossy protective top finish • Rim injection construction with extra metal rods for stiffness • Wide profile for easy starts • Tunnel design for easy edge to edge and better tracking • Adjustable binding fits size : 59": US 1-6 / Europe 32-40 • 65": US 5,5-14 / Europe 36-47 • Weight range 59": <55kg, 65": >50kg

ALLEGRE COMBO SKIS RED

Ski Only 203320002
 Package 208820001

ALLEGRE COMBO SKIS LIME GREEN

Item 203320003
 Package 67" 208820003

ALLEGRE COMBO SKIS BLUE

Item 203320001
 Package 67" 208820002



SIZE 59" 67"

SIZE 67"

SIZE 67"

PACKAGE CONTAINS

Combo ski's, Transparant Combo Bag, Ski Combo Transfer, Universal Vest, Watersports Flag Flame Orange



FEATURES

Recreational level water skis • For both combo and entry-level slalom skiing • Bright fins for extra visibility • Comfortable front toe and adjustable heel • Extra molded overlay strap for durability • Extra slalom toe • Glossy protective top finish • Rim injection construction with extra metal rods for stiffness • V bottom design for easy edge to edge and better tracking • Binding size: 59": US 1-6 / Europe 32-40 • Binding size 67": US 5,5-14 / Europe 36-47 • Weight Range 59": <59kg, 67": >50kg

BUZZ TRAINERS WATERSKIS

Item 203420001



SIZE

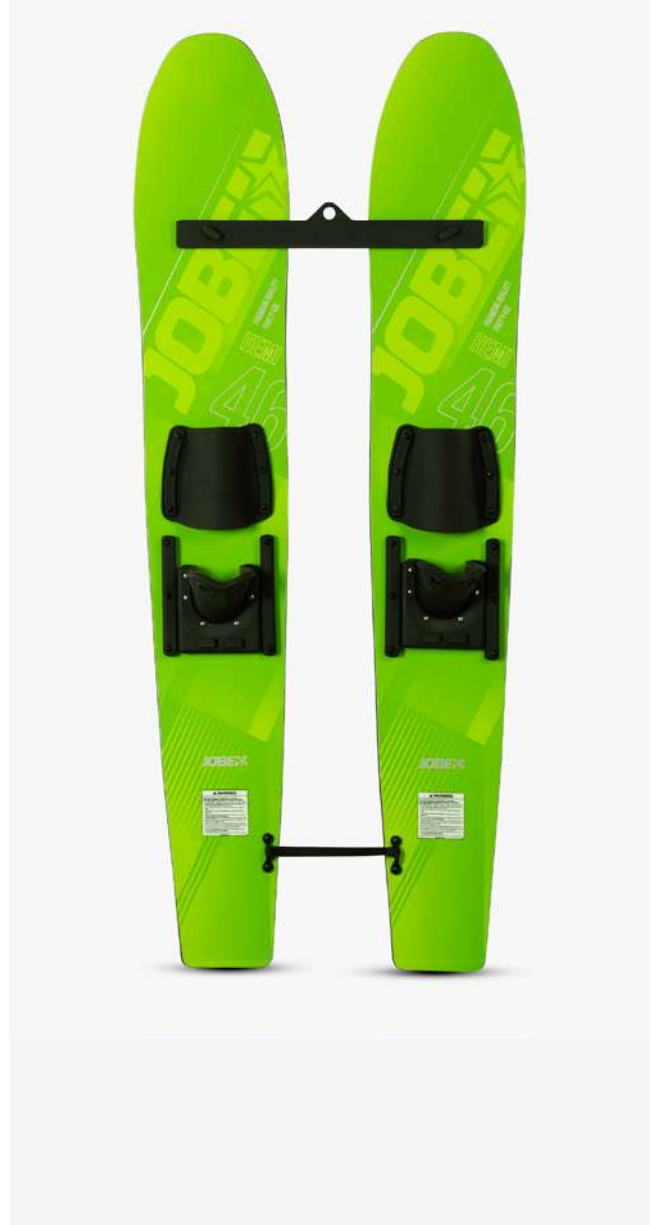
46"

FEATURES

Beginner level combo skis for kids • Bright fins for extra visibility • Comfortable front toe and adjustable heel • Wood construction • Including rope, handle and stabilizing bar • Binding size: US 3-6 - Europe 29-36

HEMI TRAINERS

Item 202420002



SIZE

46"

FEATURES

Beginner level water skis for kids • Bright fins for extra visibility • Comfortable front toe and adjustable heel • Extra overlay for durability • Glossy protective top finish • Rim injection construction with extra metal rods for stiffness • Wide profile for easy starts • Tunnel design for easy edge to edge and better tracking • Incl: Rope, handle and stabilizer bar • Adjustable binding fits size: US 3-6 / Europe 29-36



COMFORT SLALOM BINDING

Item 333113001



SIZE

- 5-8
- 8-11
- 11-14

FEATURES

Aluminium low profile base plate
 • Inner liner for pro-level support
 • Dual laces • Soft heel pads for proper foot placement • Flex panels on different areas • Soft ergonomic shaped foot bed • Size: US - Europe • 5/8 - 35/39 • 8/11 - 40/44 • 11/14 - 45/48,5

FOCUS SLALOM BINDING

Item 333116003



SIZE

- STAND
- XL

FEATURES

Nylon plastic base plate • Inner liner for pro-level support • Dual laces • Soft heel pads for proper foot placement • Flex panels on different areas • Soft ergonomic shaped foot bed • Size: US - Europe • Stand: 6.5/8.5 - 38,5/42 • XL: 9/14 - 43/48

RTP ALUMINIUM

Item 330016001



SIZE

- MINI
- STAND
- XL

FEATURES

Aluminium low profile base plate • Soft ergonomic shaped foot bed

RTP ADJUSTABLE NYLON

Item 333116002



SIZE

- STAND

FEATURES

Strong nylon plate • Soft ergonomic shaped foot bed

TRANSFER SKI COMBO

Red	Green	Blue
211220002	211220003	211220004



FEATURES

12 inch / 30.48 cm wide handle • 28mm thick round grip • Rubber handle grip
 • 12 strand main line • 60ft / 18.28 m main line • Traditional waterski rope and handle

SPORT SERIES 2 SECTION

2 section	8 section
211117025	211117026

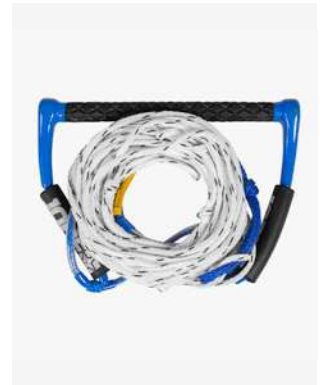


FEATURES

12inch / 30.48 cm wide handle • 28mm thick round grip • Rubber profiled handle grip • 75ft / 22.86 m main line with 2 (2 section) or 8 (8 section) extensions

15" EASY UP DEEP V DELUXE

Item 211220001



FEATURES

15 inch / 38.1 cm wide handle • 27,4mm thick round grip • EVA profiled handle grip • 16 strand main line • 70ft / 21.33 m main line • Extra V-handle for easy starts • Pencil floats to support floatation • Makes starting easier with a slalom ski

COMBO WATERSKIS BAG

Item 221219001



FEATURES

Super strong 600D nylon • 122x41x20 CM • Fits all Jobe ski sizes • Super strong 600D nylon • Easy-to-carry comfortable straps

PADDED SLALOM BAG

Item 221119001



FEATURES

Super strong 600D nylon • 180x23x25 cm • Padded throughout the entire bottom • Easy-to-carry comfortable shoulder straps

SLALOM BUOY ORANGE

Orange 420016002
Yellow 420016003
Green 420016004



FEATURES

Buoy to mark the spots on the water surface

WATERSPORTS BRIDLE WITH PULLEY 12FT 2P

Item 210017032



FEATURES

With pulley: Length 12ft / 3.65 m. Maximum pull 2 persons • 2 stainless steel hooks to connect with your boat • Float to keep the rope away from propellor • Max break strength 2375 lbs / 1077 kg

CABLE BRIDLE STAINLESS HOOKS 8FT 1P

Item 210017030



FEATURES

8 FT: Length 8ft / 2.43 m. Maximum pull 1 person • 2 stainless steel hooks to connect with your boat • Float to keep the rope away from propellor • Max break strength 1170lbs / 530 kg

ROPE BRIDLE STAINLESS HOOKS 12FT 1P

Item 210017029



NEOPRENE SLALOM BAG

Item 221117001



FEATURES

2.5 mm neoprene bag • 145x20 cm • Suitable for all Jobe skis • Tie-down straps

WATERSPORTS BRIDLE WITHOUT PULLEY 8FT 2P

Item 210017031



FEATURES

Without pulley: Length 8 ft / 2.43 m.

SKI FLAG FLAME ORANGE

Item 210305001



FEATURES

Bright colored flag that serves as a warning