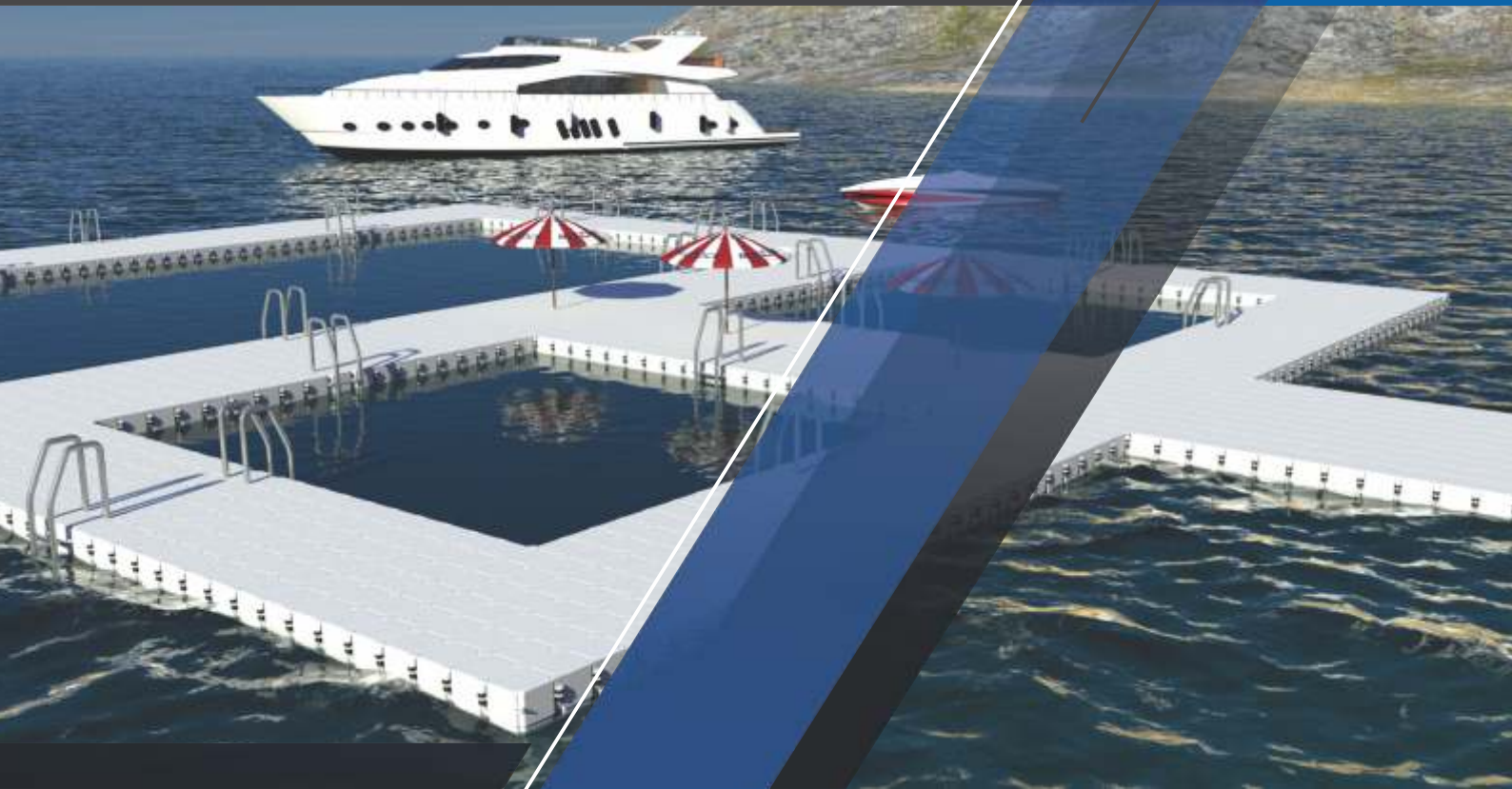


# **BULDOCK**

## **QUALITY MODULAR PONTOON SYSTEMS**



## Brochure

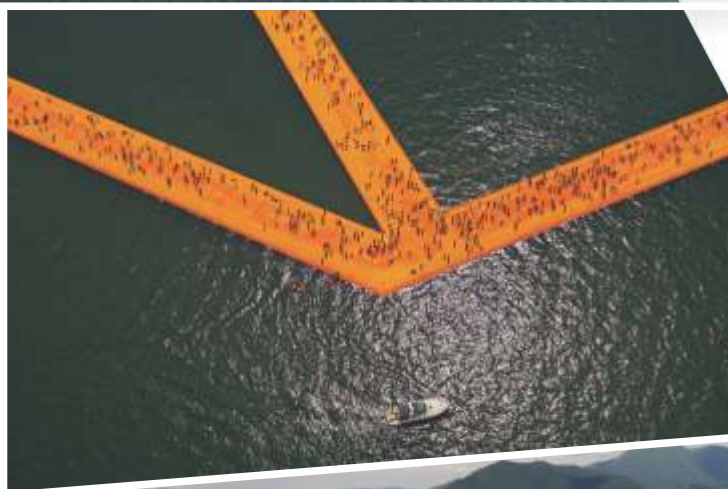
[www.buldock.com](http://www.buldock.com)

# Art Project **The Floating Piers:**

Our brand is uncompromising with the quality of cubes and pins that are used to build floating docks, floating platforms, floating bridges and paths, yacht ports, breakwaters and many more.



World-famous artist, Christo, chose this modular system after extensive tests ensuring the exceptional quality of the product.





BulDock, a subsidiary of Deep Dive Systems, offers design, manufacturing, and installation of high-quality floating modular dock systems.

BulDock has numerous advantages over competitors due to the company's strong commitment to innovation. Our products are created through cutting-edge techniques and technologies to deliver safe, efficient and durable floating system solutions.



**Committed to the highest quality standards and ongoing improvement, we continuously test and improve our products to deliver the best value to our customers.**

# ADVANTAGES



## LIMITLESS POSSIBILITIES

The cubes, the building blocks of BulDock's system, are suitable for any type of shorelines and can be assembled to create virtually **any shape and size** to suit your need.



## STRONG AND SAFE

For BulDock, safety is an absolute priority. Our systems are thoroughly and regularly tested, according to international standards. They have an anti-slipping surface, high load capacity, and no metal parts to ensure a **safe and comfortable experience**



## RESPONSIBLE AND RESISTANT

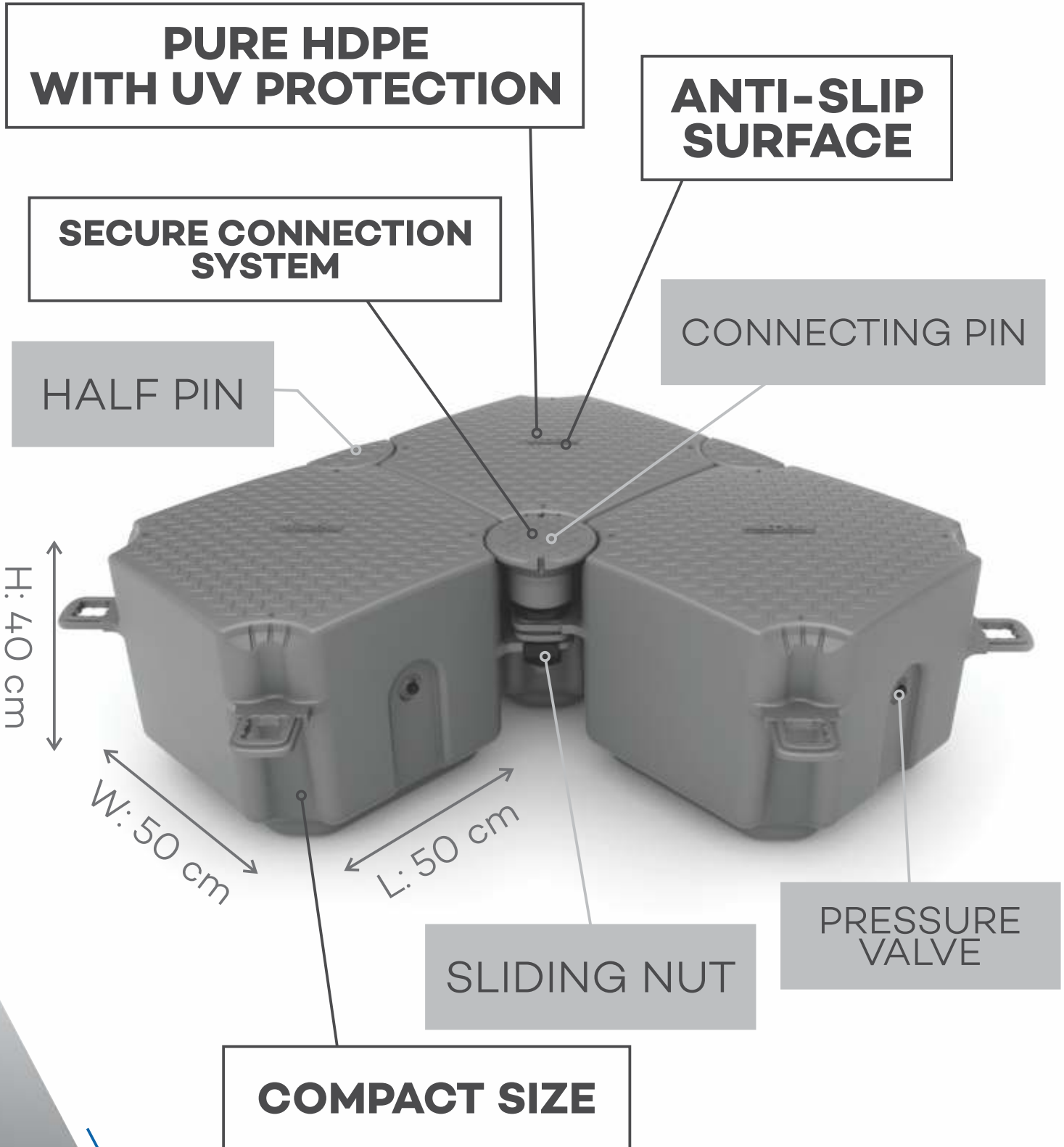
At BulDock, we are conscious about the effect our work might have on the environment. That is why our products are not only manufactured in a responsible way but are also **resistant to sunlight, water and impact**, making them last much longer.

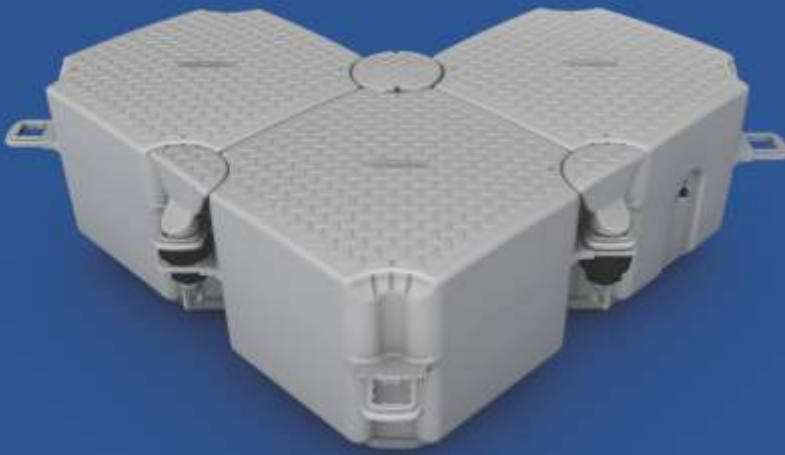


## QUICK AND CONVENIENT

BulDock's floating systems are **designed to be simple**. Cubes are easy to assemble with just a few pins and nuts, and can be docked irrespective of weather conditions and seabed type. The docks can also be anchored to already existing structures.

# ADVANTAGES OF THE SYSTEM:





BulDock's products are made of 100% high-density polyethylene and come with a 10-year warranty. Our modular systems are tested in extreme conditions to ensure reliability. They are easy to assemble, use and require minimal maintenance. Because of their various configurations and applications, they are certain to satisfy any pontooning need.



## CHARACTERISTICS OF THE SYSTEM:

Material/Composition: **High-density polyethylene (HDPE)**

Surface: **Anti-slip**

Dimensions of the Cube: **LxW: 50 cm x 50 cm H: 40 cm**

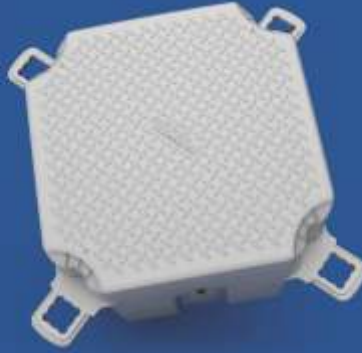
Weight of Cube: **6.8 kg**

Floating capacity: **Cube: 92 kg per cube or 368 kg per sq. m**

Standard colors: **Gray, Beige, Blue, Orange**

Optional colors: **any color as per customer's preference**

BulDock's floating systems are **designed to be simple**. Cubes are easy to assemble with just a few pins and nuts, and can be docked in a variety of weather conditions and sealed type. The docks can also be anchored to already existing structures.



# THE CUBE

The BulDock cube, a building unit of the system, boasts a number of innovative features. It is made of HDPE, for one. It is also taller than similar products in the market, meaning improved stability and efficiency. Premium plastic UV inhibitors are used in production, which ensures durability of the product.



# CONNECTING PIN

Once inserted into the sliding nut, the connecting pin is what holds the cubes together. When fixed in its' position, the connecting pin, which also boasts an anti-slippery surface, becomes a part of the dock and contributes to the overall stability of the system.





## Cube BulDock H40

Material / Composition:

**High-density polyethylene (HDPE)**

Surface: **Anti-Slip**

Dimension:

**50x50x40 cm (Length/Width/Height)**

Weight: **6.8 kg**

Floating Capacity:

**92 kg per cube or 368 kg per sq. m.**

Standard colors: **Grey; Beige; Blue; Orange**

Custom colors: **Other colors available on special request**



## Cube BulDock H27

Material / Composition:

**High-density polyethylene (HDPE)**

Surface: **Anti-Slip**

Dimension:

**50x50x27 cm (Length/Width/Height)**

Weight: **5.5 kg**

Floating Capacity:

**62 kg per cube or 248 kg per sq. m.**



## V Cube BulDock H40 – Flat

Material / Composition:

**High-density polyethylene (HDPE)**

Surface: **Anti-Slip**

Dimension:

**50x50x40 cm (Length/Width/Height)**

Weight: **8.0 kg**

Floating Capacity:

**80 kg per cube or 320 kg per sq. m.**





## V Cube BulDock H27 – Flat

Material / Composition:

**High-density polyethylene (HDPE)**

Surface: **Anti-Slip**

Dimension:

**50x50x27 cm (Length/Width/Height)**

Weight: **7.5 kg**

Floating Capacity:

**50 kg per cube or 200 kg per sq. m.**



## V Cube BulDock H40 – Roller

Material / Composition:

**High-density polyethylene (HDPE)**

Surface: **Anti-Slip**

Dimension:

**50x50x40 cm (Length/Width/Height)**

Weight: **8.5 kg**

Floating Capacity:

**80 kg per cube or 320 kg per sq. m.**



## V Cube BulDock H27 – Roller

Material / Composition:

**High-density polyethylene (HDPE)**

Surface: **Anti-Slip**

Dimension:

**50x50x27 cm (Length/Width/Height)**

Weight: **8.0 kg**

Floating Capacity:

**50 kg per cube or 200 kg per sq. m.**



# BASIC FLOATING DOCK COMPONENTS



## HALF PIN

Similarly to the connecting pin, the half pin holds the cubes together. The difference is that it is used on the edges of the dock, not in the middle.



## SLIDING NUT



The sliding nut attaches to the connecting pin in order to form a structure.



## NUT

The nut attaches to the exterior lug connector in order to form a structure.



## SPACER



Each BulDock cube has four “ears” that are positioned at different heights. The spacer is what fills the space between them for improved stability and is mostly used when assembling the jet slider.

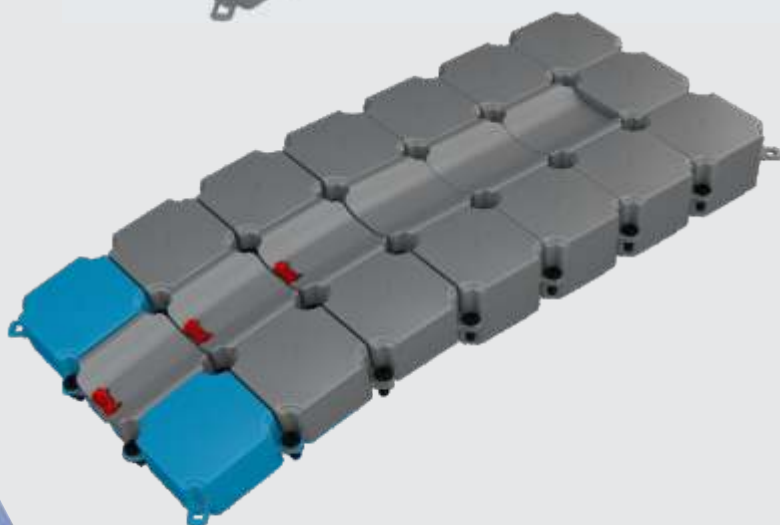
## Jet Slider 350 - Jet Ski Medium Size Jet Slider 400 - Jet Ski Big Size



The **Jet Slider** is made of efficient new-generation HDPE (high density polyethylene).

The Jet Slider possesses the same great advantages as the dock system.

The **JetSlider** is **lightweight**, but **due to its' technology**, is resistant to collision, chemical products, UV rays and severe weather conditions.



### Material / Composition:

High-density polyethylene (HDPE)

### Dimension:

350x150x40 cm (Length/Width/Height)

**Weight:** 150 kg

**Standard Colors:**



GREY



BEIGE

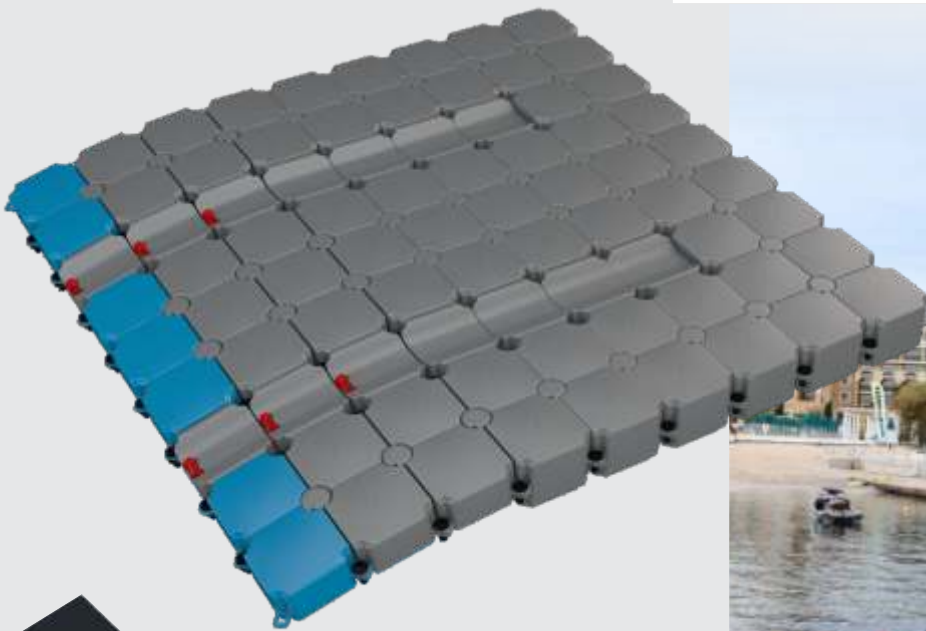
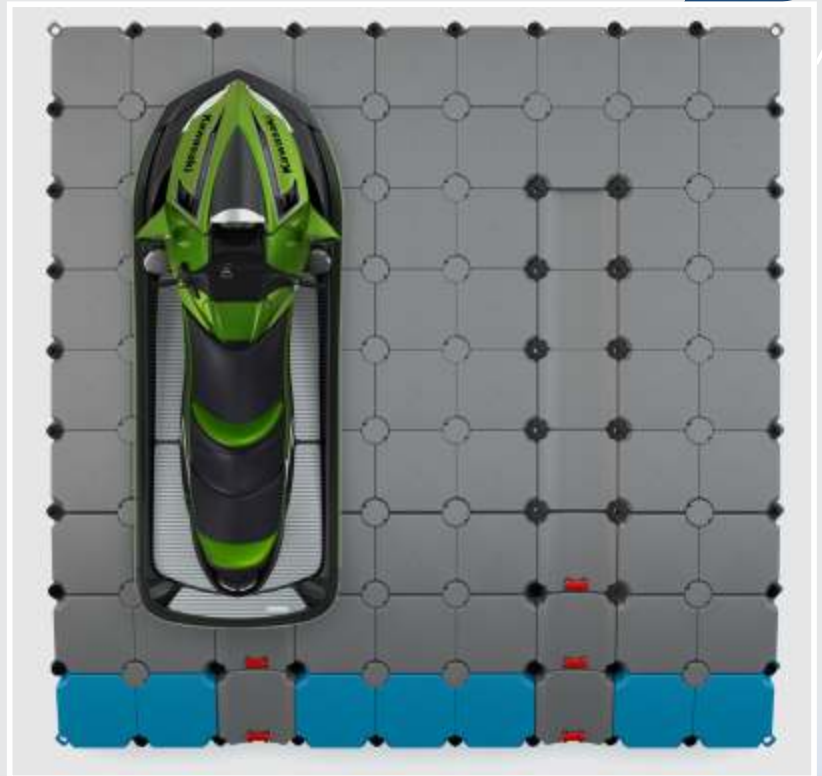
**Optional colors:**

any color as per customer's wish



# Jet Slider Twin

BulDocks' floating jet slide system is a unique dry-dock system. Its' exceptional design prevents any disproportionate strain on the hull by distributing the watercraft's weight evenly. The Jet Slider does not feature any moving parts, which might be damaged or require additional maintenance. **Designed to simplify your needs, BulDock's product makes servicing of your watercraft much easier and pleasurable.**



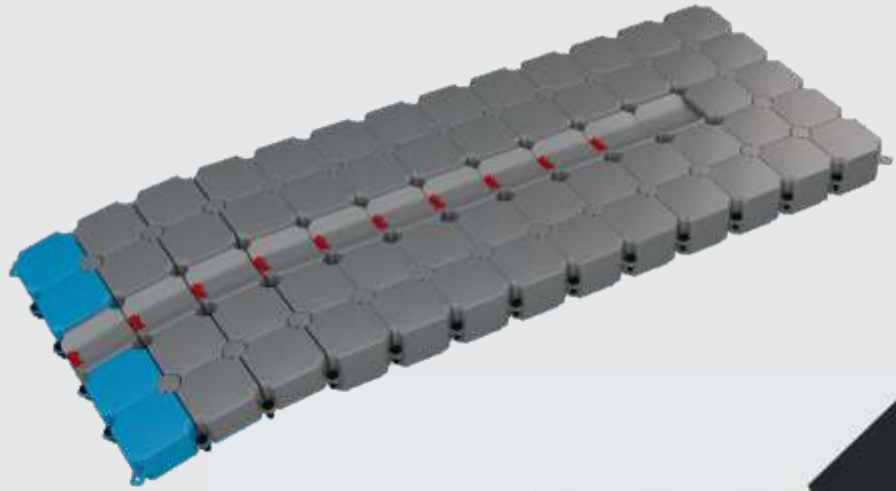
# Small Boats Platform

The **Small Boats Platform** is made of efficient new-generation HDPE (high density polyethylene).

The Small Boats Platform possesses the same great advantages as the dock system.

The **Small Boats Platform** is lightweight, but due to its' technology, is resistant to collision, chemical products, UV rays and severe weather conditions.

BulDock's small boat system is a unique dry-dock system. Its' exceptional design prevents any disproportionate strain on the hull by distributing the watercraft's weight evenly. The Small Boat System does not feature any moving parts, which might be damaged or might require additional maintenance. **Designed to simplify your needs, BulDock's product makes servicing of your watercraft much easier and pleasurable.**



## Material / Composition:

High-density polyethylene (HDPE)

## Dimension:

6.5m x 2.5m for inflatable boats  
5/5.5m long

650x250x40 cm  
(Length/Width/Height)

## Weight:

390 kg

## Standard Colors:



GREY



BEIGE

**Optional colors:** any color as per customer's wish



# ANCHORING ACCESSORIES

## LUG CONNECTOR



Like all other products of ours, the lug connector is manufactured using injection molding, which enhances security and ensures the safety of the dock.

## PILE GUIDING CUBE

These cubes hold the pontoon in place using piles. This method of anchorage is very secure and allows the structure to smoothly follow variations in the water levels - ideal for tidal zones.



## CONCRETE ANCHOR



The concrete anchor is easy to use and can be utilized to increase the strength of the anchor as a whole.



# ANCHORING ACCESSORIES

## CONNECTING ADAPTOR



The Connecting Adaptor is a technological innovation, designed by BulDock to provide strong connection between the floating modular system and the key wall. The steel plate can be attached to the key wall with bolts. This installation allows for vertical movements of the dock, according to changing water levels.

## ANCHORING RING

The anchorage ring is used to attach the concrete anchor's chain to the dock. Its' tension can be adjusted, while the stainless steel material makes it an ideal component to use in both salty and fresh water.



## CONNECTING PIN FOR ANCHORING

The connecting pin is attached underneath the dock and is used to hide any visible chain and gaps between the cubes.

## CONNECTING PIN WITH TOP UP RING

The Connecting Pin with Top Up Ring is a quality BulDock product, which is comprised of a connecting pin and a stainless-steel high quality ring. This product is the perfect solution for mooring a jet or a boat to your dock.



# ANCHORING ACCESSORIES

## HELIX ECO ANCHOR – ELLIPSE

These anchors have up to five times more holding power than conventional mooring anchors or other alternatives. Their shorter scoping allows for suspended ground tackle, virtually no bottom disturbance and longer lifespan. They are reusable and environmentally friendly. The Helix Eco Anchor – Eclipse is made of high-grade steel, with drop-forged connections and hot-dipped galvanization.

Material: **hot-galvanized steel**

- The alloy used for the production of the anchor guarantees elasticity and resistance.
- **Blade shape patent**
- **Fully galvanized**
- Tensile strenght certificates available upon installation with Beareu **Veritas** request



Tensile Strength Certificates	Ellipse II	Ellipse IIIS	Ellipse IVF
Minimum holding certified by VERITAS – soft soil	1.2 t	2.3 t	4.0 t
Equivalent concrete block – soft soil	1.7 t	3.3 t	5.7 t
Maximum holding certified by VERITAS – compact soil	2.0 t	4.2 t	5.3 t
Equivalent concrete block –compact soil	2.9 t	6.0 t	7.7 t

# ACCESSORIES

**BulDock offers a range of accessories for floating dock systems.**

## INOX LADDER

Made of polished stainless steel, the Inox Ladder's extra long handrails make it unique and easy to board.

Dimensions are as follows:

H - 183cm, W: 83cm (steps width: 56cm)



## HANDRAIL GALVANIZED STEEL 50 CM

BulDock's handrail design is the single-point solution to provide stability and support on your floating modular system. It's made of hot-galvanized steel, with dimensions of W: 50cm; H: 110cm and is designed to counterbalance leaning.

## HANDRAIL GALVANIZED STEEL 190 CM

This handrail is made of hot-galvanized steel and designed by BulDock to provide utter stability when boarding and disembarking the watercraft from the floating modular system.

With dimensions of W:190cm; H: 108cm, it is heavy-duty and light simultaneously.





# ACCESSORIES

## CONNECTING PIN WITH INOX CLEAT – STYLISH

BulDock's Connecting Pin with Inox Cleat is a combination of pin and high-quality stylish inox cleat, making it an integral part of the floating modular system. It is the perfect solution for mooring jetski or small boats to your dock.



## HALF PIN WITH INOX CLEAT – STRONG

BulDock's Half Pin with Inox Cleat is a combination of pin and high-quality stylish inox cleat, making it an integral part of the floating modular system. It is the perfect solution for mooring jetski or small boats to your dock.



## HALF PIN WITH INOX CLEAT – STYLISH

BulDock's Connecting Pin with Inox Cleat is a combination of pin and high-quality stylish inox cleat, making it an integral part of the floating modular system. It is the perfect solution for mooring jetski or small boats to your dock.



# ACCESSORIES

## SIDE HANDRAIL CONNECTOR

The connecting pin is attached underneath the dock and is used to hide any visible chains, and gaps between the cubes.



## DOUBLE LAYER CONNECTOR

Designed by BulDock, this Double Layer Connector is used to assemble two layers of floating cubes, forming them into a solid floating modular structure, which provides the utmost stability against water current movements. It is made of high-density polyethylene (HDPE) and has the strength to withstand any force of nature.



## CONNECTING PIN WITH INOX CLEAT - STRONG



The long pin is designed to also act as a cleat, making it an integral part of the floating system. A convenient solution for mooring watercrafts..

# ACCESSORIES

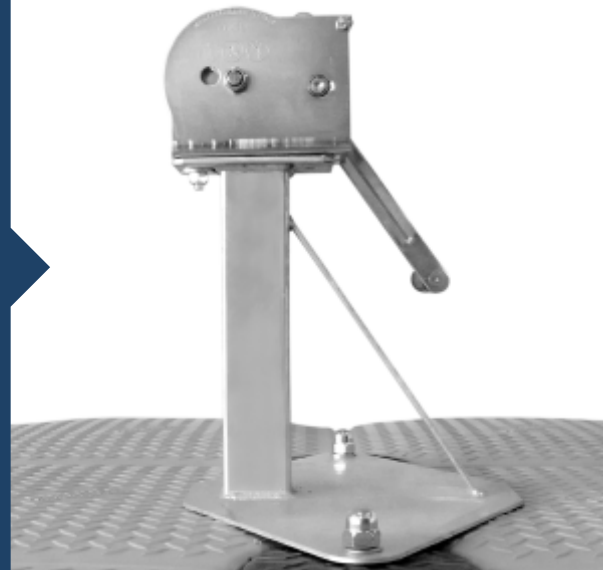
## HALF PIN WITH NYLON CLEAT



BulDock Half Pin is a combination of half pin and high quality nylon cleat becomes an integral part of the floating modular system. The perfect solution for mooring jet ski or small boat to your dock.

## WINCH STAND ASSEMBLY

High quality winch stand assembly is ready to fit to your floating platform. The Steel galvanization protect the winch from water corrosion.



## NUT TOOL

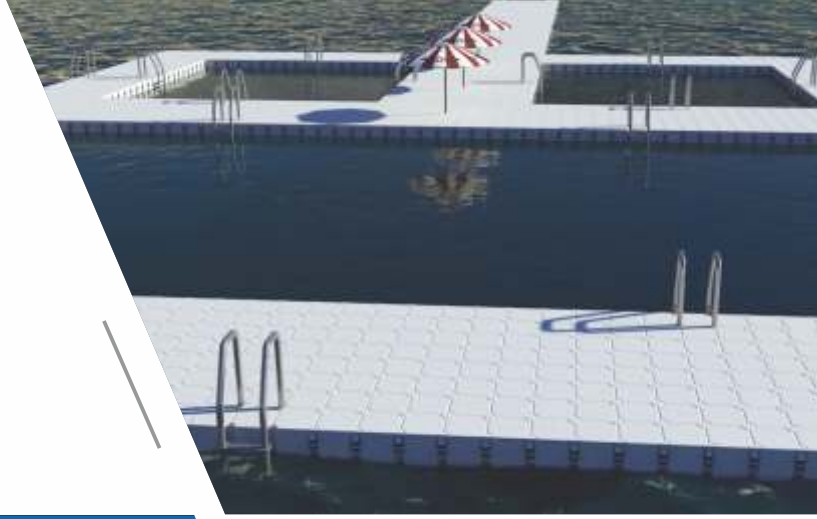


BulDock specially designed made from aluminum - useful tool for placing the nuts on the floating platforms.

# APPLICATIONS

## LEISURE

BulDock's modular docking system can be assembled into a number of recreational facilities, such as floating pools, fishing platforms, aqua parks, and floating holiday complexes.



## EVENTS

BulDock's modular docking system will make the quests of your event literally "walk on water". From lakeside weddings to beach parties, our floating dock system can make every occasion unique.

## ART INSTALLATIONS

BulDock's modular floating system was used in the art installation of world-renowned artists Christo and Jean-Claude. Their vibrant piece was named among the 2016 most influential exhibitions by The New York Times.





# APPLICATIONS



## MARINAS

BulDock's modular docking system is the perfect addition to any lake cottage or beach house. Its' simple assemble process, reliability and virtually limitless configuration options, make it a unique feat to any waterside residence.

## RESIDENTIAL

Because of its' flexibility, the BulDock modular docking system can be configured as a marina. It's easy to assemble and suitable for high-load capacities.



## BRIDGES AND PATHWAYS

Clunky wooden and metal bridges are a thing of the past. BulDock's modular docking system can be used to construct bridges and pathways which are both safe, due to their anti-slippery surface, and effective, because of their high-load capacity.

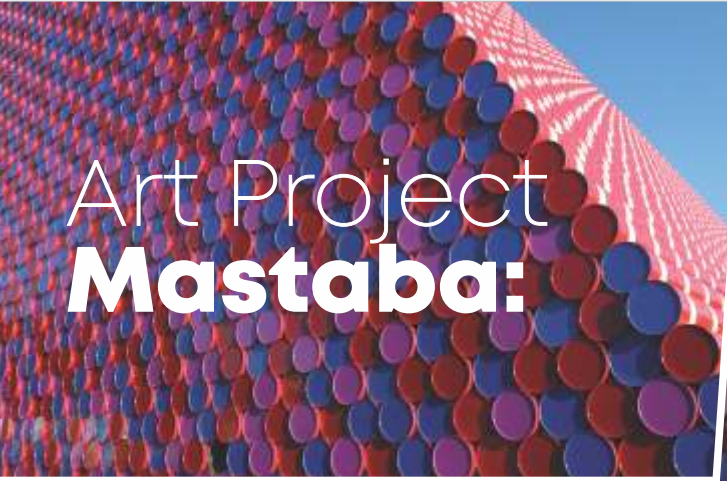
## INDUSTRIAL

BulDock's modular docking system can be used in various industrial settings, including construction, repair and maintenance of bridges, canals, harbours, and other water-based facilities.





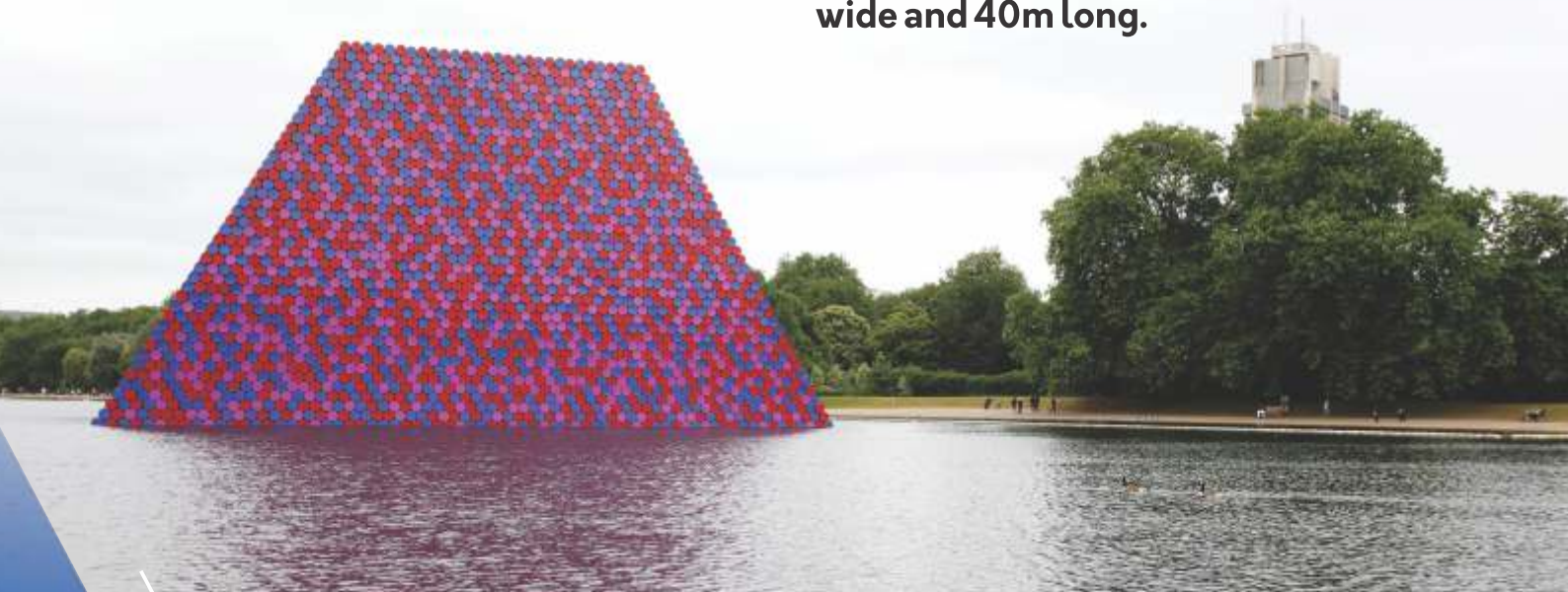
# Art Project **Mastaba:**



Deep Dive Systems and BulDock's engineers while constructing and anchoring the floating structure.

The Mastaba itself is a stack of 55-gallon barrels, numbering 7,506 in all, floating on the lake.

Christo's Mastaba is a modern masterpiece. It is 20m high by 30m wide and 40m long.



# DISTRIBUTORS

BULGARIA	CROATIA	POLAND	SPAIN
<b>BulDock Ltd.</b> Perla Park Complex, sector B, floor 2 36, Okolovrasten pat Str. Sofia, BULGARIA Phone: +359 878 333 878 +359 886 166 199 Email: office@buldock.com www.deep-dive-systems.com	<b>Area maris d.o.o.</b> Trg kralja Tomislava 7 52100 Pula Email: info@areamaris.hr www.areamaris.hr	<b>Taurus Sea Power Sp. z o.o.</b> Dziewięć Włók 33 a 03-021 Pruszcz Gdanski Phone: +48 58 30 20 225 Email: taurus@taurus.gda.pl Website: www.taurus.gda.pl	<b>INTERMAR SAILING</b> Spain Contact : Mr. Joan Gelpí Phone: +34 670 29 69 46 Email: info@intermarsailing.com www.intermarsailing.com
SWITZERLAND	SWITZERLAND	ITALY	MONTENEGRO
<b>GERMAN &amp; FRENCH PART</b> Chemin de Champvent 16D, 1008 Jouxpens-Mézery Contact : Mr. Stéphane Ferraton Phone: +41 225 72 70 Email: s.ferraton@buldock.ch www.buldock.ch	<b>ITALIAN PART</b> Idea Green SA, Via St. Maria 69a 6596 Gordola Contact : Mr. Enzo Trazzera Phone: +41 225 72 70 Email: info@buldock.ch www.buldock.ch	<b>Centro Sud Italia, Oliva Srl</b> Via Lanzara, 33 – 84014 Nocera Inferiore (SA), Italia Contact : Mr. Alfonso Oliva Phone: +39 388 2414596, +39 081 18549172 Email: info@olivasrlit Website: www.olivasrlit	<b>Beny com DOO</b> Dzordza Vasingtona 73, Podgorica, Montenegro Contact : Mr. Petar Popovic Phone: +38 267 600829, +38 267 600899, +38 267 745551 Email: poppetar17@gmail.com
SCANDINAVIA			
<b>BulDock Scandinavia AB</b> Address: Energigatan 4 43437 Kungsbacka, Sweden Phone: +46 73 2853625 Email: info@buldockscandinavia.se Website: www.buldockscandinavia.se			

# DEALERS

GERMANY	GERMANY	BULGARIA	GREECE
<b>Qseaboat.</b> Garzauer Chaussee 1A/TP6 15344 Strausberg Germany Contact : Herr Daniel Queißner, Herr Marek Stein Phone: +493341/303387 Email: info@qseaboat.de Website: www.qseaboat.de	<b>US BOOTSMARKT e.K.                      Marina Marianne Pohlese</b> Grüner Weg 5-9, 14109 Berlin-Wannsee, Germany Contact: Joachim F. Koch Phone: +49 (0)30 80 48 48 00 Mobile: +49(0) 172 30 00 380 Email: joe@boote-berlin.de Website: www.boote-berlin.de	<b>SALTUS Ltd.</b> Address: Burgas 8000, Bulgaria, Aleksandar Batemberg Str., Hotel Marina Burgas Contact person: George Rangelov Phone: +46 73 2853625 Email: ecobeach.solutions@gmail.com Website: ecobeach.solutions/ index.php/en/home-page	<b>More Watersports Ltd.</b> Marathonos 13 4040 Limassol, Cyprus Phone: +357 99 810 818 Email: more.parklane@gmail.com Website: <a href="http://www.morewatersport.com">www.morewatersport.com</a> <b>Ideagenesis - Thessaloniki</b> Contact: Yannis Kaplanidis Phone: +302313037100 Mobile: +306983797125 Email: info@ideagenesis.gr Website: www.esc.guide/buldock
ROMANIA	ROMANIA	SAUDI ARABIA	CYPRUS
<b>SC Highsports, Webmarket SRL</b> Gardenia Village, Aleea Gardenia nr. 32, RO-077067 sat Petresti, comuna Corbeanca, Romania Contact : Leon Rotaru Phone: +40 744 671288 Email: leon.rotaru@correctcraft.ro Website: www.iwake.ro	<b>SC.CLAYSGROUP SRL</b> Contact : Bogdan Puie Phone: +40 742 697 048 Email: bogdanekdmanager.eu	<b>Shali Marine</b> Contact: Ali A. Batterjee Phone: +966567099999 Email: info@theshaligroup.com Website: www.theshaligroup.com	<b>MORE WATERSPORTS LTD.</b> Marathonos 13 4040 Limassol, Cyprus Phone: +357 99 810 818 Email: more.parklane@gmail.com www.morewatersport.com



Learn more about BulDock products on our website  
[www.buldock.com](http://www.buldock.com)



**Request a quotation**  
 Let's build your dock!



+359 878 333 878  
 +359 886 166 199



**Become a BulDock distributor**



Get in touch  
[office@buldock.com](mailto:office@buldock.com)