

looper series

LOOPER is an ultralight one-piece-frame block provided with a dyneema Snap-Loop for fast, easy and safe connections.

Characteristics:

- hard black anodized one-piece-aluminium frame;
- resin sheave on composite fibre bushing and double side ball bearings;
- Dyneema Snap-Loop.

THE ONE PIECE FRAME

The one-piece aluminium extruded body is the strongest and lightest solution, no assembling pin rivets or screws and nuts. CNC machined - polished - hard black anodized and teflon coated.

THE COMPOSITE FIBRE SHEAVE

The resin (aluminium on larger mod) sheave runs on the main Composite Fibre bearing and on a ground s.steel hub: low friction, high-loads and no lubricant required.

The self-captive side ball bearing reduces the friction and makes disassembling, cleaning and maintenance very easy.

Sheaves are supplied with the s.steel hub, they are available separately.



1

2

3



For a "tied looper" the block without Snap-Loop is also available, the line is not included.

For this version without snap-loop replace **LS** with **LL** in the model number.

For Example:

LS1080 is the 80 mm Looper with Snap-Loop, LL1080 is the same without Snap-Loop.

SNAP LOOP AND DOG-BONE FASTENINGS

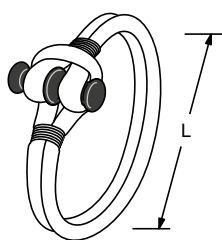
Dyneema Snap Loops including "Dog-Bone" aluminium fastenings are available. Dog-Bone fastenings are also available separately so that Loops of any length can be prepared.

SNAP LOOP

These snap loops are obtained with a spliced Dyneema line without cover and an aluminium dog-bone.



mod. LS2070

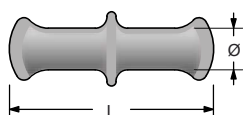


MODEL	DYNEEMA Ø mm	BL kg	SWL* kg	L mm	WEIGHT gr
LS2060	4	3000	1000	100	11
LS2070	5	5200	1600	110	20
LS2080	6	6600	2200	125	44
LS2100	8	11000	3500	160	81

* The Safe Working Load SWL is 1/3 of the breaking load, obtained from traction tests on a new Loop.

DOG-BONE

You can prepare your special snap loop using Antal aluminium dog-bones, separately available.



MODEL	FOR DYNEEMA Ø mm	Ø mm	L mm	WEIGHT gr
LS2062	4	6.5	30	3
LS2072	5	8.0	37	6
LS2082	6	10.0	46	13
LS2102	8	11.5	55	22
LS2122	10	13.5	67	36
LS2142	12	16.0	79	55

DYNEEMA PAD-EYE

Special eye-strap designed for Dyneema Loop, aluminium made, hard black anodizing. For more information, see pag. 174



looper

SIZE 60

sheave diameter = 60 mm
line diameter = 10 mm
SWL = 1000 kg



Mod. LS2060

4 MM DYNEEMA LOOP
Weight = 11 gr



Mod. LS1060

SIMPLE
Weight* = 106 gr



Mod. LS1062

DOUBLE
Weight* = 196 gr



Mod. LS1061

SIMPLE BECKET
Weight* = 116 gr



Mod. LS1063

DOUBLE BECKET
Weight* = 206 gr

SIZE 70

sheave diameter = 70 mm
line diameter = 12 mm
SWL = 1600 kg



Mod. LS2070

5 MM DYNEEMA LOOP
Weight = 20 gr



Mod. LS1070

SIMPLE
Weight* = 155 gr



Mod. LS1072

DOUBLE
Weight* = 285 gr



Mod. LS1071

SIMPLE BECKET
Weight* = 172 gr



Mod. LS1073

DOUBLE BECKET
Weight* = 302 gr

SIZE 80

sheave diameter = 80 mm
line diameter = 14 mm
SWL = 2200 kg



Mod. LS2080

6 MM DYNEEMA LOOP
Weight = 44 gr



Mod. LS1080

SIMPLE
Weight* = 268 gr



Mod. LS1082

DOUBLE
Weight* = 490 gr



Mod. LS1081

SIMPLE BECKET
Weight* = 290 gr



Mod. LS1083

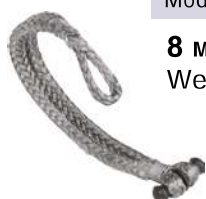
DOUBLE BECKET
Weight* = 510 gr

SIZE 100

sheave diameter = 100 mm
line diameter = 16 mm
SWL = 3500 kg

Mod. LS2100

8 MM DYNEEMA LOOP
Weight = 81 gr



Mod. LS1100

SIMPLE
Weight* = 438 gr



Mod. LS1101

SIMPLE BECKET
Weight* = 473 gr

SIZE 120

sheave diameter = 120 mm
line diameter = 18 mm
SWL = 6000 kg

Mod. LS2120

10 MM DYNEEMA LOOP
Weight = 150 gr



Mod. LS1120

SIMPLE
Weight* = 890 gr



Mod. LS1121

SIMPLE BECKET
Weight* = 925 gr

SIZE 140

sheave diameter = 140 mm
line diameter = 20 mm
SWL = 8000 kg

Mod. LS2140

12 MM DYNEEMA LOOP
Weight = 219 gr



Mod. LS1140

SIMPLE
Weight* = 1129 gr



Mod. LS1141

SIMPLE BECKET
Weight* = 1179 gr